

LG Water Solutions

Data Sheet



Brackish Water Reverse Osmosis (RO) Membranes

LG BW 400 AFR

Overview

LG Chem's NanoH₂O™ brackish water RO membranes serve various municipal and industrial applications. LG BWRO, all incorporated with innovative Thin Film Nanocomposite (TFN) technology, is offered in industry standard configuration easily fit into existing or new RO plants. Global clients in more than 50 countries have already experienced LG BWRO and superior quality and performance of the membranes lead to repeat customers.

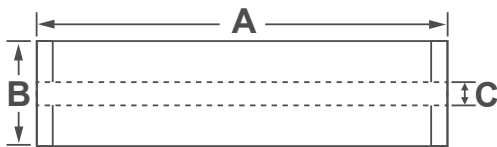
LG BW AFR(Anti Fouling) membranes offer a combination of high productivity, consistency, and durability with improved fouling resistance; suitable for challenging brackish water and water reuse applications.

Product Specifications

* 8-inch spiral wound membrane

Active Membrane Area ft ² (m ²)	Permeate Flow Rate GPD (m ³ /d)	Minimum Salt Rejection (%)	Stabilized Salt Rejection (%)	Feed Spacer (mil)
400 (37)	10,500 (39.7)	99.5	99.6	34

Test Conditions : 2,000ppm NaCl @ 25°C(77°F), 225psi (15.5bar), pH 8, Recovery 15%. Permeate flows for individual elements may vary +/- 15%.



A mm (in.)	B mm (in.)	C mm (in.)	Weight kg (lbs.)
1,016 (40)	200 (7.9)	28.6 (1.125)	16 (35)

Operating Specifications

For more information and operating guidelines, visit www.LGwatersolutions.com

Max. Applied pressure	600psi (41bar)
Max. Chlorine concentration	< 0.1 ppm
Max. Operating temperature	45°C (113°F)
pH Range, Continuous (Cleaning)	2-11 (2-12)
Max. Feedwater turbidity	1.0 NTU
Max. Feedwater SDI (15 mins)	5.0
Max. Feed flow	75gpm (17m ³ /h)
Max. Pressure drop (ΔP) for each element	15psi (1.0bar)

The information and data contained herein are deemed to be accurate and reliable and are offered in good faith, but without guarantee of performance. LG Chem assumes no liability for results obtained or damages incurred through the application of the information contained herein. Customer is responsible for determining whether the products and information presented herein are appropriate for the customer's use and for ensuring that customer's workplace and disposal practices are in compliance with applicable laws and other governmental enactments. Specifications subject to change without notice. NanoH₂O is the Trademark of The LG water solutions or an affiliated company of LG chem. All rights reserved. © 2017 LG Chem, Ltd.

LENNTECH

info@lennotech.com Tel. +31-152-610-900
www.lennotech.com Fax. +31-152-616-289

Rev. I (02.17)

NanoH₂O™